

Ventil

Test units for all types of:

Shut-off Valves

Safety (relief) Valves

Control Valves



CALL **1800 023 859** TO SPEAK WITH ONE OF OUR TECHNICIANS

Innovative Onsite Engineered Solutions

Ventil manufacturers test units for testing of any type of valve;

- ❑ Valve range: ¼ - 120" / DN6 - 3,000 mm.
- ❑ Test pressure range: vacuum up to 36,250 PSI / 2,500 bar.
- ❑ Universal and robust designed for valve repair.
- ❑ CNC Multi station for production testing.
- ❑ Stationary – Transportable – Portable.
- ❑ Performance testing (torque / open-close action / duration).
- ❑ Cryogenic testing -196°C / -324°F high temperature (fire safe) testing 1,500°C / 2,730°F.
- ❑ Modified atmosphere / Clean room applications for Oxygen services.
- ❑ Actuator testing.

About Ventil

Test Units for Shut off valves

Test Units for Safety valves

Transportable workshops

Test Units for manufacturers

Test Units for actuators

Ventil Valve Academy

V-Tec Lapping & Grinding

Model: VCB



MODEL: VCB25

About Ventil

Test Units for Shut off valves

Test Units for Safety valves

Transportable workshops

Test Units for manufacturers

Test Units for actuators

Ventil Valve Academy

V-Tec Lapping & Grinding

- Vertical clamping and testing of all common valves.
- Available up to 120" / DN 3,000 mm with clamping force up to 5,000 ton.
- Up to 100 ton with rotating bridge, larger models with rail system for quick and safe (un)loading.



MODEL: VCB100

Model: VCB

Model	Range*	Maximum clamping force	Distance between columns	Distance between sealing adapters	Low pressure Gas test system	High pressure Liquid test system
VCB5	½ - 6" DN15 - 150 mm	5 ton	14" 350 mm	0 - 20" 0 - 500 mm	0 - 7 bar / 100 PSI Other Gas test systems up to 1,000 bar / 14,500 PSI available on request	0 - 400 bar / 5,800 PSI Other Liquid test systems up to 2,500 bar / 36,250 PSI available on request
VCB30-S	½ - 10" DN15 - 250 mm	30 ton	18" 460 mm	0 - 30" 0 - 750 mm		
VCB30-L	½ - 16" DN15 - 400 mm	30 ton	28" 720 mm	0 - 40" 0 - 1,000 mm		
VCB50	1 - 16" DN25 - 400 mm	50 ton	28" 720 mm	0 - 40" 0 - 1,000 mm		
VCB100	2 - 24" DN50 - 600 mm	100 ton	40" 1,000 mm	0 - 44" 0 - 1,100 mm		
VCB200	2 - 36" DN50 - 900 mm	200 ton	55" 1,400 mm	0 - 60" 0 - 1,500 mm		
VCB500	2 - 48" DN50 - 1,600 mm	500 ton	64" 1,600 mm	0 - 60" 0 - 1,500 mm		

*The range and mentioned dimensions can be adapted to the specific application.

About Ventil

Test Units for Shut off valves

Test Units for Safety valves

Transportable workshops

Test Units for manufacturers

Test Units for actuators

Ventil Valve Academy

V-Tec Lapping & Grinding

The Ventil test units are delivered 'ready for use' and can be completed with a variety of optional features;

- ❑ Test and operating systems for actuators and other controls.
- ❑ High pressure gas test system for Nitrogen / Helium testing.
- ❑ Full Safety Enclosure with interlock.
- ❑ Inner (Radial) sealing adapters for Butt or Socket weld ends.
- ❑ Fully automatic test sequence (CNC testing).



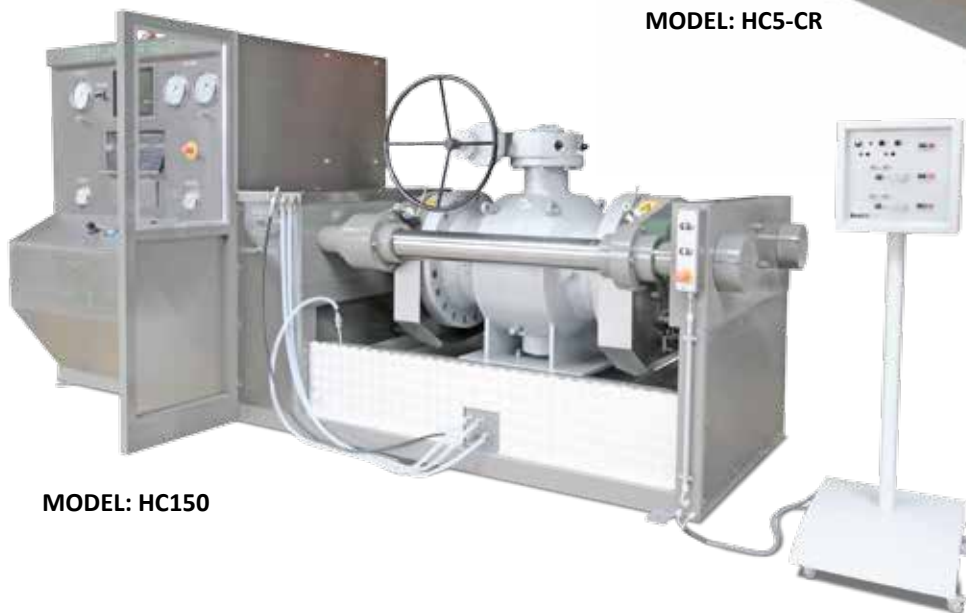
MODEL: VCB500-CR

Model: HC

- Horizontal clamping and testing of all common valves.
- Available up to 120" / DN3,000 with clamping force up to 5,000 ton.



MODEL: HC5-CR



MODEL: HC150

About Ventil

Test Units for Shut off valves

Test Units for Safety valves

Transportable workshops

Test Units for manufacturers

Test Units for actuators

Ventil Valve Academy

V-Tec Lapping & Grinding



MODEL: HCT3000

Model: HC

Model	Range*	Maximum clamping force	Distance between columns	Distance between sealing adapters	Low pressure Gas test system	High pressure Liquid test system
HC5	½ - 6" DN15 - 150 mm	5 ton	14" 350 mm	0 - 20" 0 - 500 mm	0 - 7 bar / 100 PSI Other Gas test systems up to 1,000 bar / 14,500 PSI available on request	0 - 400 bar / 5,800 PSI Other Liquid test systems up to 2,500 bar / 36,250 PSI available on request
HC30-S	½ - 10" DN15 - 250 mm	30 ton	18" 460 mm	0 - 30" 0 - 750 mm		
HC30-L	½ - 16" DN15 - 400 mm	30 ton	28" 720 mm	0 - 40" 0 - 1,000 mm		
HC50-S	1 - 10" DN25 - 250 mm	50 ton	18" 460 mm	0 - 30" 0 - 750 mm		
HC50-L	½ - 16" DN15 - 400 mm	50 ton	28" 720 mm	0 - 40" 0 - 1,000 mm		
HC75	1 - 16" DN25 - 400 mm	75 ton	28" 720 mm	0 - 40" 0 - 1,000 mm		
HC100	2 - 24" DN50 - 600 mm	100 ton	40" 1,000 mm	0 - 44" 0 - 1,100 mm		
HC150	2 - 24" DN50 - 600 mm	150 ton	40" 1,000 mm	0 - 60" 0 - 1,500 mm		
HC250	2 - 24" DN50 - 600 mm	250 ton	40" 1,000 mm	0 - 60" 0 - 1,500 mm		
HC400	2 - 32" DN50 - 800 mm	400 ton	48" 1,200 mm	0 - 67" 0 - 1,700 mm		
HC600-S	4 - 24" DN100 - 600 mm	600 ton	48" 1,200 mm	0 - 67" 0 - 1,700 mm		
HC600-L	4 - 36" DN100 - 900 mm	600 ton	56" 1,400 mm	0 - 80" 0 - 2,000 mm		
HC800	4 - 36" DN100 - 900 mm	800 ton	55" 1,400 mm	0 - 80" 0 - 2,000 mm		
HC1000	8 - 40" DN200 - 1,000 mm	1,000 ton	64" 1,600 mm	0 - 80" 0 - 2,000 mm		
HC1500	8 - 40" DN200 - 1,000 mm	1,500 ton	64" 1,600 mm	0 - 80" 0 - 2,000 mm		
HC2000	8 - 48" DN200 - 1,200 mm	2,000 ton	80" 2,000 mm	0 - 100" 0 - 2,500 mm		
HC3000	8 - 48" DN200 - 1,200 mm	3,000 ton	80" 2,000 mm	0 - 100" 0 - 2,500 mm		
HC4000	8 - 48" DN200 - 1,200 mm	4,000 ton	80" 2,000 mm	0 - 100" 0 - 2,500 mm		

*The range and dimensions can be adapted to the specific application.

Model: HC Optional features

The Ventil test units are delivered 'ready for use, and can be completed with a variety of optional features;

- ▣ Test and operating systems for actuators and other controls.
- ▣ Columns in a inclination angle for better access and easy (un)loading.
- ▣ High pressure gas test system for Nitrogen / Helium testing.
- ▣ Full Safety Enclosure with interlock.
- ▣ Inner (Radial) sealing adapters for Butt or Socket weld ends.
- ▣ Fully automatic test sequence (CNC testing).



MODEL: HC600-CR

About Ventil

Test Units for Shut off valves

Test Units for Safety valves

Transportable workshops

Test Units for manufacturers

Test Units for actuators

Ventil Valve Academy

V-Tec Lapping & Grinding

Model: HVC

- Clamping the valve in horizontal position (valve stem vertical) and testing the valve in any position between 0 - 90°.
- Hydraulic controlled tilting system with safety interlock. Available for any valve type.
- 64" / DN1,600 with 1,000 ton clamping force available.



MODEL: HVC300

About Ventil

Test Units for Shut off valves

Test Units for Safety valves

Transportable workshops

Test Units for manufacturers

Test Units for actuators

Ventil Valve Academy

V-Tec Lapping & Grinding

Model: HVC

Model	Range*	Maximum clamping force	Distance between columns	Distance between sealing adapters	Low pressure Gas test system	High pressure Liquid test system
HVC5	½ - 6" DN15 - 150 mm	5 ton	14" 350 mm	0 - 20" 0 - 500 mm	0 - 7 bar / 100 PSI Other Gas test systems up to 1,000 bar / 14,500 PSI available on request	0 - 400 bar / 5,800 PSI Other Liquid test systems up to 2,500 bar / 36,250 PSI available on request
HVC30-S	½ - 10" DN15 - 250 mm	30 ton	18" 460 mm	0 - 30" 0 - 750 mm		
HVC30-L	½ - 16" DN15 - 400 mm	30 ton	28" 720 mm	0 - 40" 0 - 1,000 mm		
HVC50-S	1 - 10" DN25 - 250 mm	50 ton	18" 460 mm	0 - 30" 0 - 750 mm		
HVC50-L	1 - 16" DN25 - 400 mm	50 ton	28" 720 mm	0 - 40" 0 - 1,000 mm		
HVC75	1 - 16" DN25 - 400 mm	75 ton	28" 720 mm	0 - 40" 0 - 1,000 mm		
HVC100	2 - 24" DN50 - 600 mm	100 ton	40" 1,000 mm	0 - 44" 0 - 1,100 mm		
HVC150	2 - 24" DN50 - 600 mm	150 ton	40" 1,000 mm	0 - 60" 0 - 1,500 mm		
HVC250	2 - 24" DN50 - 600 mm	250 ton	40" 1,000 mm	0 - 60" 0 - 1,500 mm		
HVC400	2 - 32" DN50 - 800 mm	400 ton	48" 1,200 mm	0 - 60" 0 - 1,500 mm		
HVC600-S	4 - 24" DN100- 600 mm	600 ton	48" 1,200 mm	0 - 67" 0 - 1,700 mm		
HVC600-L	4 - 24" DN100 - 600 mm	600 ton	56" 1,400 mm	0 - 80" 0 - 2,000 mm		
HVC800	4 - 36" DN100 - 900 mm	800 ton	55" 1,400 mm	0 - 80" 0 - 2,000 mm		

*The range and dimensions can be adapted to the specific application.

Model: VC-SRV



MODEL: VC25-SRV

- ▣ Testing with both Gas and Liquid.
- ▣ Ridged design with high quality finish.
- ▣ Standard completed with the unique Ventil Computer registration System.
- ▣ According to all common international standards and directives.
- ▣ Stainless steel control panel and liquid reservoir.

Standard safety features; Safety Closure, Safety interlock on clamping system, test system kill switch and pressure activated flash light.

Model	Range	Clamping force
VC25-SRV	½-10	25 ton
VC40-SRV	½-16	40 ton
VC70-SRV	½-16	70 ton

About Ventil

Test Units for Shut off valves

Test Units for Safety valves

Transportable workshops

Test Units for manufacturers

Test Units for actuators

Ventil Valve Academy

V-Tec Lapping & Grinding

MODEL: MP2-SRV





Model: VC-SRV-FL-II

Model: VC-SP-T4

- Compact design for the use in Containers or other small workshops.
- Ridged design with high quality finish.

Standard safety features; Safety screen, Safety interlock on clamping system and test system kill switch.

Model	Range	Clamping force
VC25-SP-T4	½-10	25 ton
VC40-SP-T4	½-16	40 ton



About Ventil

Test Units for Shut off valves

Test Units for Safety valves

Transportable workshops

Test Units for manufacturers

Test Units for actuators

V-Tec Lapping & Grinding

Ventil Valve Academy

Model: CT800-T4

Fully equipped test unit for testing and (re)adjusting all common types of tank relief valves, like for example; Pressure/Vacuum ('breather') valves and emergency vacuum vents in the range 2 – 24".

The CT800 is completed with a dual range test system for testing in both pressure and vacuum conditions.

This test unit is specially designed to verify the settings and leak rates according to clean air and emission control acts and test standards, like for example API2000. The design and configuration is based on many years of experience in safety valve testing and repair.

The test unit is fully built in-house and only first class components are used. The CT800 is delivered ready for use.

The CT800-T4 is available as stand-alone unit or as an optional module with other safety valve test units, shown on the previous pages.



About Ventil

Test Units for Shut off valves

Test Units for Safety valves

Transportable workshops

Test Units for manufacturers

Test Units for actuators

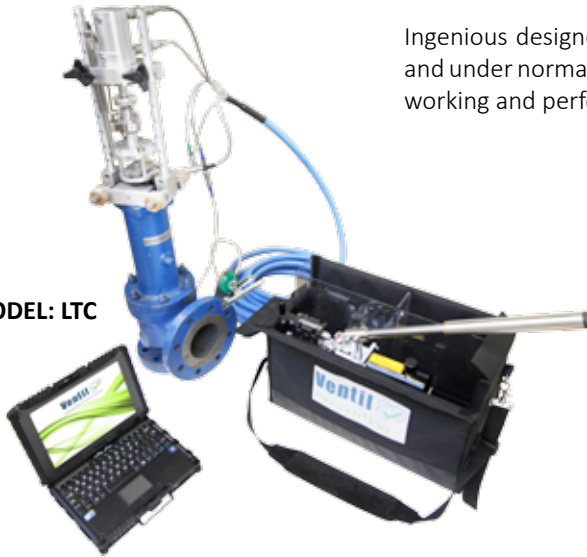
Ventil Valve Academy

V-Tec Lapping & Grinding

Model: PreVenTest, In-Situ testing of PSV's

Ingenuously designed system for testing all types of spring operated PSV's In-Situ, in process and under normal operating conditions. The portable system enables you to prove the correct working and performance or identify PSV's in need of repair without plant shut-down.

MODEL: LTC



MODEL: ADVANCE



About Ventil

Test Units for Shut off valves

Test Units for Safety valves

Transportable workshops

Test Units for manufacturers

Test Units for actuators

Ventil Valve Academy

V-Tec Lapping & Grinding

- No plant shut-down
- No dismantling of the valve
- No loss of productivity
- No loss of profitability

The PreVenTest system is available in 2 types;

- **PreVenTest LTC**, Light weight, hand controlled and battery driven
- **PreVenTest Advance**, Fully automatic

Both types are available as ATEX versions for the use in explosive atmospheres.

Transportable Workshops Model: CT



Fully equipped test and repair facilities for on-site overhaul and testing of Shut-off valves, Safety valves and Control valves. The 10, 20 or 40 ft Containers feature all necessary tools and equipment for the standard recondition procedure, but can also be equipped for your specific application and environment / climate conditions.

Model	Application	Size
CT10-SRV	Test- and Repair Container for Safety Valves	10 ft
CT20-1	Test Container for PSV Testing - VC 25 CC	20 ft
CT20-2	Repair Container for Shut-Off-, Control- & Safety Valves	20 ft
CT20-3	Test Container for PSV Testing - VC 40 CC	20 ft
CT20-4	Test Container for Shut-Off-, Control- & Safety Valves	20 ft
CT40-1	Test- and Repair Container	40 ft

About Ventil

Test Units for Shut off valves

Test Units for Safety valves

Transportable workshops

Test Units for manufacturers

Test Units for actuators

Ventil Valve Academy

V-Tec Lapping & Grinding



MODEL: CT10-SRV

For off-shore applications, the new fabricated container is certified according to DNV 2.7 / EN 12079 and can optionally be prepared for the use of explosive (ATEX) atmospheres.



MODEL: CT40-1



About Ventil

Test Units for Shut off valves

Test Units for Safety valves

Transportable workshops

Test Units for manufacturers

Test Units for actuators

Ventil Valve Academy

V-Tec Lapping & Grinding

CNC Valve Testing



MODEL: VCBT150-MT3

Fully automatic test units for quick and efficient testing a larger series of valves.

Ventil IT specialists design smart software for controlling and monitoring the test sequence. The fully integrated computer system ensures a very quick and efficient operating procedure. The automatic test system controls the test procedure and a combination of accurate pressure and flow sensors detect / measure the leakage. The intelligent software compares the found test results with the programmed test standard and within seconds the system gives a 'pass' or 'fail' signal.

About Ventil

Test Units for Shut off valves

Test Units for Safety valves

Transportable workshops

Test Units for manufacturers

Test Units for actuators

Ventil Valve Academy

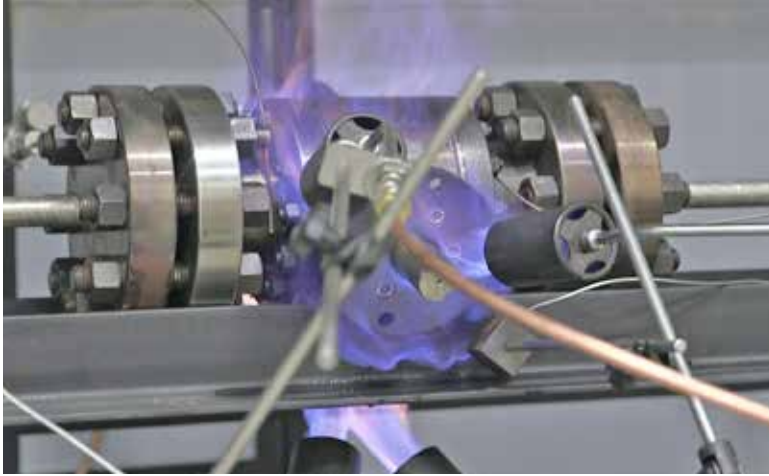
V-Tec Lapping & Grinding



Model: VCBT10-MT5



'Modified atmospheres'



About Ventil

Test Units for Shut off valves

Test Units for Safety valves

Transportable workshops

Test Units for manufacturers

Test Units for actuators

Ventil Valve Academy

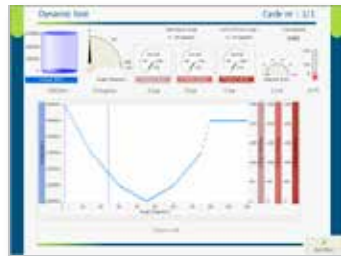
V-Tec Lapping & Grinding

Custom build solutions for testing Shut-off valves, Safety valves and Control valves in any condition.

- Cryogenic testing up to maximum -196°C / -324°F .
- High temperature (fire safe) testing $1,500^{\circ}\text{C}$ / $2,730^{\circ}\text{F}$.
- Clean room test and inspection equipment.

Actuator testing

Designed and equipped for testing electric-, pneumatic and hydraulic controlled actuators. The range of static (torque) performance testing, measured by calibrated sensors, runs from 0 – 500,000 Nm / 370,000 lbf. The dynamic test procedure subjects the actuator to a simulation of a torque resistance pattern of a quarter turn ball or butterfly valve. The touch screen operated control system offers flexible programming of the settings and test criteria.



About Ventil

Test Units for Shut off valves

Test Units for Safety valves

Transportable workshops

Test Units for manufacturers

Test Units for actuators

Ventil Valve Academy

V-Tec Lapping & Grinding

Ventil Valve Academy

The knowledge to get you there

Industrial valves and safety valves are final process elements and play a key role in the operation of a continuously generating (petro)chemical process or power plant. They either block the pressure, regulate the fluid or protect the process plant.

Still 50-60% of the fugitive emission of industrial process plants is caused by leaking valves. It is therefore obvious that the plant efficiency is directly affected by the non-performance of valves, either in terms of output or in terms of reliability and availability.

The VENTIL VALVE ACADEMY is the guide to understanding valves, the process of selection, maintenance and repair. Our objectives;

- ▣ Provide the highest quality and brand neutral information, giving plant management assurance that they have the skilled people they need to maximize asset value.
- ▣ Provide instructor-led training in different levels and tailored for the specific application of the customer.
- ▣ Provide in-house courses, conducted at your company, anywhere in the world, within your schedule.

A complete overview with the available training courses is available on www.ventilvalveacademy.com



About Ventil

Test Units for Shut off valves

Test Units for Safety valves

Transportable workshops

Test Units for manufacturers

Test Units for actuators

Ventil Valve Academy

V-Tec Lapping & Grinding





CALL 1800 023 859 TO SPEAK WITH ONE OF OUR TECHNICIANS
Innovative Onsite Engineered Solutions

HEAD OFFICE:

Unit 2, 52 Vinnicombe Drive, Canningvale, Perth, WA, Australia. 6155
www.mactechaustralia.com.au • alan@mactechaustralia.com.au

Ph: +61 (08) 9455 6677

Mob/cell: 0409 081 343

Fax: +61 (08) 9455 6644