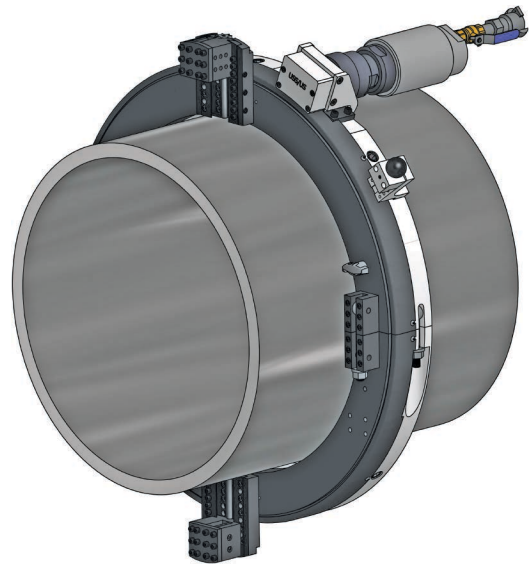


# 824USS CLAMSHELL LATHE

MACTECH PORTABLE MACHINING SOLUTIONS

## Features

- Sever or simultaneous Sever/Bevel 18 to 24 inch diameter pipe.
- Cold cutting in hazardous environments.
- Exceptionally rigid, split-frame for precise on-site machining.
- Lightweight, low clearance design for easy handling in tight working spaces.
- Tool Holder accepts standard 3/4 or 1 inch tool bits.
- Air Caddy (air filter and oiler) included with air drive systems.
- Custom setups and drives available for your application.



**Mactech 824USS Clamshell Lathe**

## Application Range

18 to 24 inch (457 to 610 mm) diameter pipe

## Feed

Feed Mechanism: 7 point starwheel and tripper  
Feed Rate: .0035 inch (0.09 mm) per revolution

## Drives

Air Drive

Air supply requirement: 100 cfm @ 100 psi  
(2.8 m<sup>3</sup>/min @ 6.9 bar)

Hydraulic Drive

HPU requirement: 10-15 gpm @ 1000 psi  
(38-57 lpm @ 69 bar) continuous pressure  
Hydraulic motor includes hose whips and quick-disconnects

## Weights (includes tool blocks and motor)

Operating Weights

824USS Air Drive: 227 lbs. (102 kg)

824USS Hydraulic Drive: 228 lbs. (103 kg)

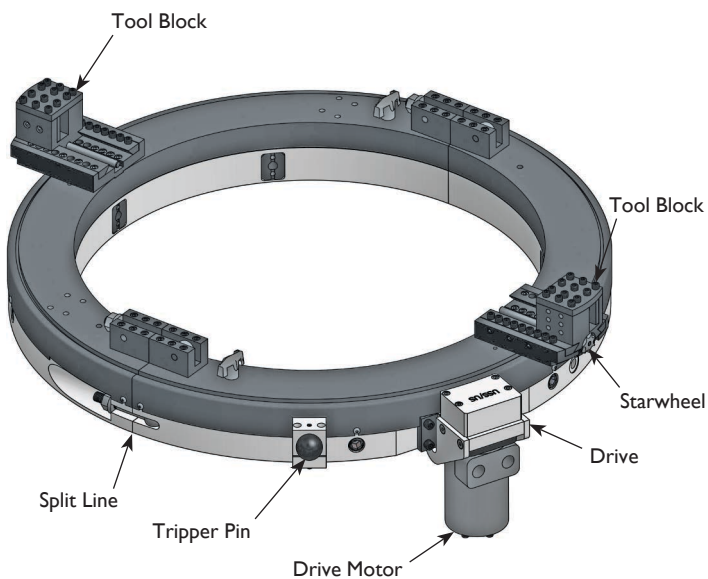
Shipping Weights

824USS Air Drive: 355 lbs. (161 kg)

824USS Hydraulic Drive: 343 lbs. (156 kg)

## Options

- Full line of tool bits
- Right angle and reversible drives
- Single Point machining attachment
- Axial Feed machining attachment
- Counterbore/Facing attachment
- Hydraulic Power Unit



**824USS Clamshell Lathe Components**



**MACTECH AUSTRALIA HEAD OFFICE:**

Unit 2, 52 Vinnicombe Drive, Canningvale, Perth, WA, Australia. 6155  
www.mactechaustralia.com.au • alan@mactechaustralia.com.au

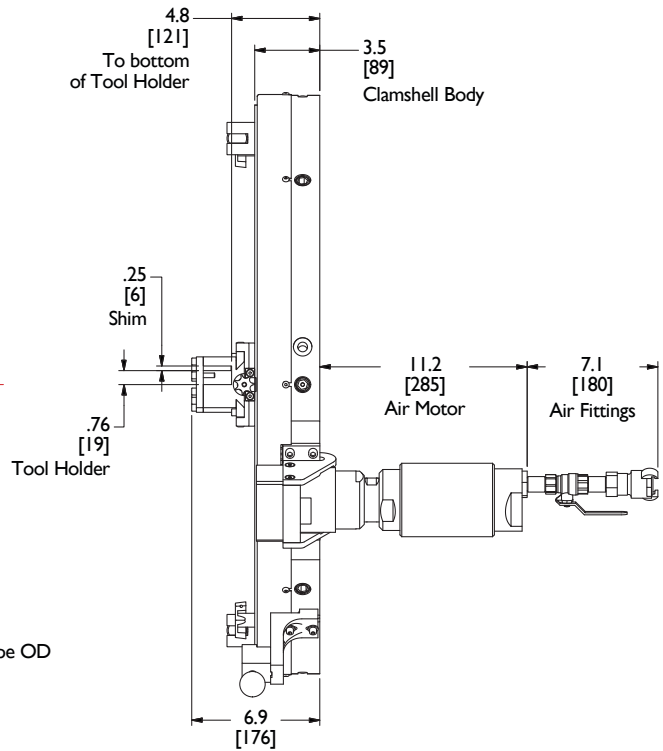
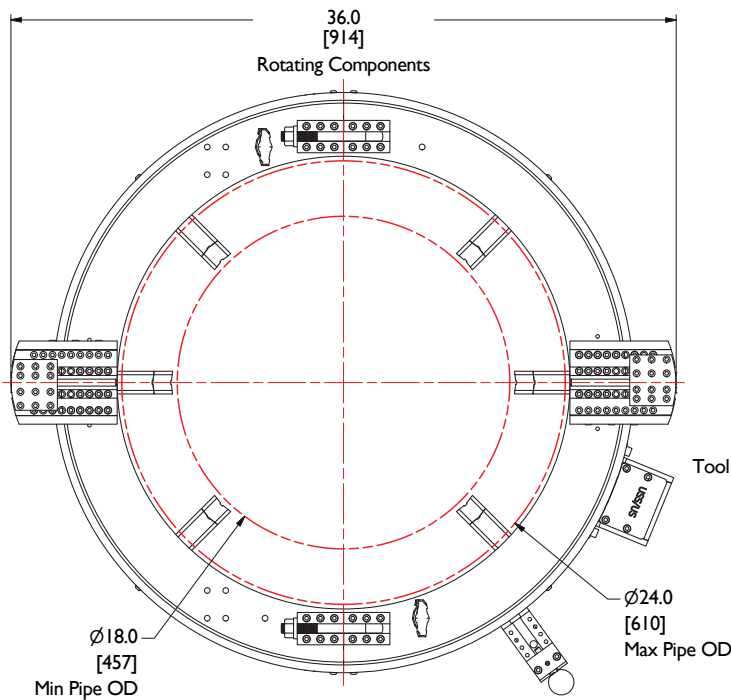
**Ph: +61 (08) 9455 6677**

**Mob/cell: 0409 081 343**

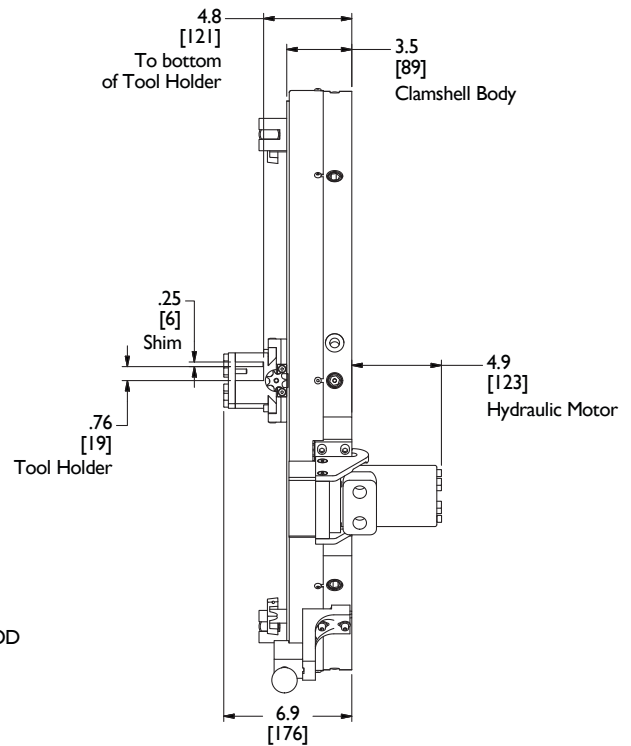
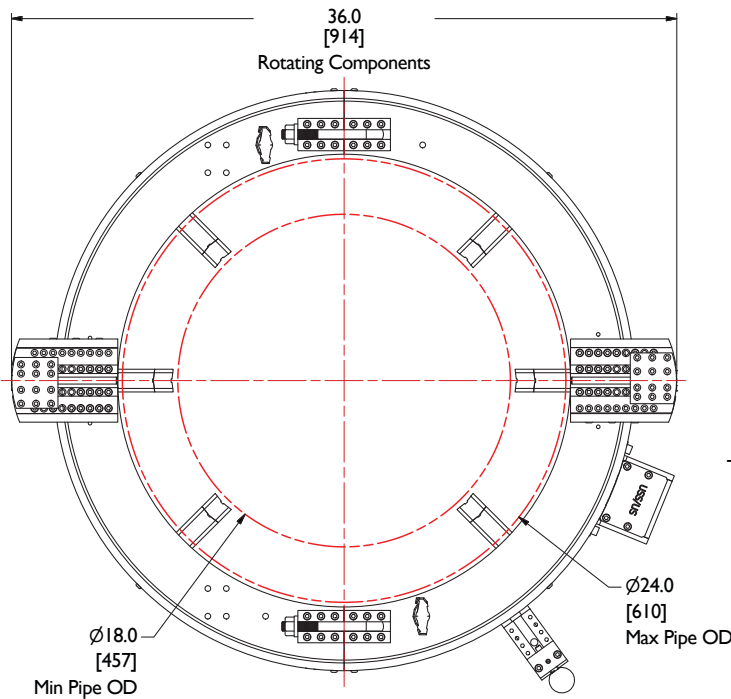
**Fax: +61 (08) 9455 6644**

# 824USS CLAMSHELL LATHE

MACTECH PORTABLE MACHINING SOLUTIONS



**824USS with Air Drive**



**824USS with Hydraulic Drive**



**MACTECH AUSTRALIA HEAD OFFICE:**

Unit 2, 52 Vinnicombe Drive, Canningvale, Perth, WA, Australia. 6155  
[www.mactechaustralia.com.au](http://www.mactechaustralia.com.au) • [alan@mactechaustralia.com.au](mailto:alan@mactechaustralia.com.au)

Ph: +61 (08) 9455 6677

Mob/cell: 0409 081 343

Fax: +61 (08) 9455 6644