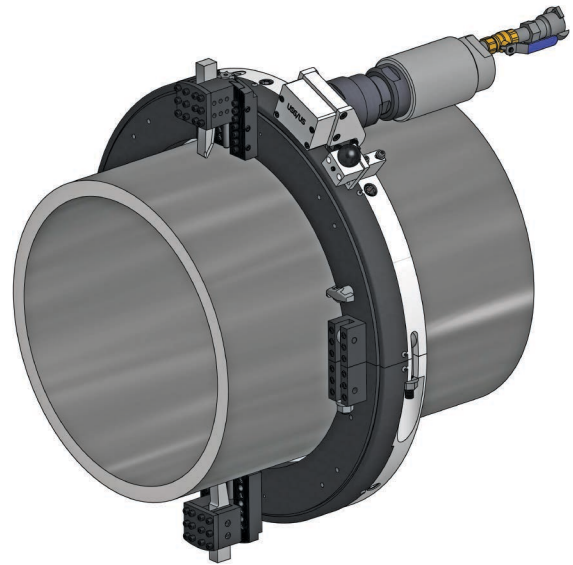


820USS CLAMSHELL LATHE

MACTECH PORTABLE MACHINING SOLUTIONS

Features

- Sever or simultaneous Sever/Bevel 14 to 20 inch diameter pipe.
- Cold cutting in hazardous environments.
- Exceptionally rigid, split-frame for precise on-site machining.
- Lightweight, low clearance design for easy handling in tight working spaces.
- Tool Holder accepts standard 3/4 or 1 inch tool bits.
- Air Caddy (air filter and oiler) included with air drive systems.
- Custom setups and drives available for your application.



Mactech 820USS Clamshell Lathe

Application Range

14 to 20 inch (356 to 508 mm) diameter pipe

Feed

Feed Mechanism: 7 point starwheel and tripper
Feed Rate: .0035 inch (0.09 mm) per revolution

Drives

Air Drive

Air supply requirement: 100 cfm @ 100 psi
(2.8 m³/min @ 6.9 bar)

Hydraulic Drive

HPU requirement: 10-15 gpm @ 1000 psi
(38-57 lpm @ 69 bar) continuous pressure
Hydraulic motor includes hose whips and quick-disconnects

Weights (includes tool blocks and motor)

Operating Weights

820USS Air Drive: 191 lbs. (86 kg)

820USS Hydraulic Drive: 192 lbs. (87 kg)

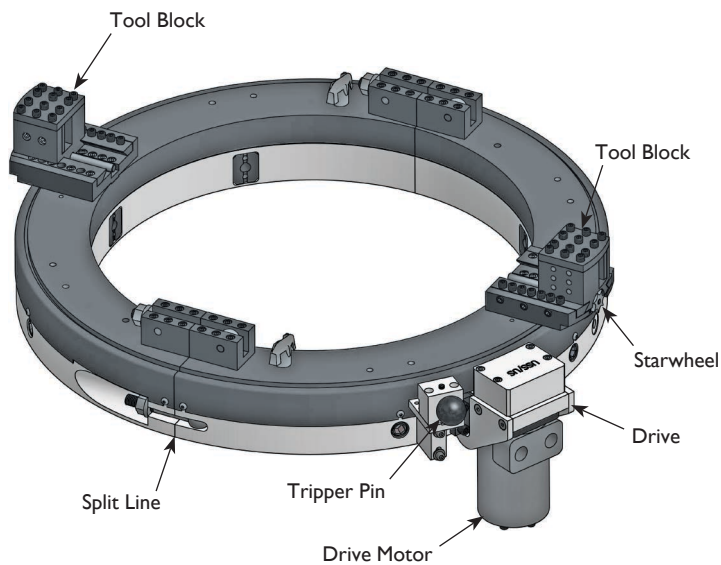
Shipping Weights

820USS Air Drive: 319 lbs. (145 kg)

820USS Hydraulic Drive: 307 lbs. (139 kg)

Options

- Full line of tool bits
- Right angle and reversible drives
- Single Point machining attachment
- Axial Feed machining attachment
- Counterbore/Facing attachment
- Hydraulic Power Unit



820USS Clamshell Lathe Components



MACTECH AUSTRALIA HEAD OFFICE:

Unit 2, 52 Vinnicombe Drive, Canningvale, Perth, WA, Australia. 6155
www.mactechaustralia.com.au • alan@mactechaustralia.com.au

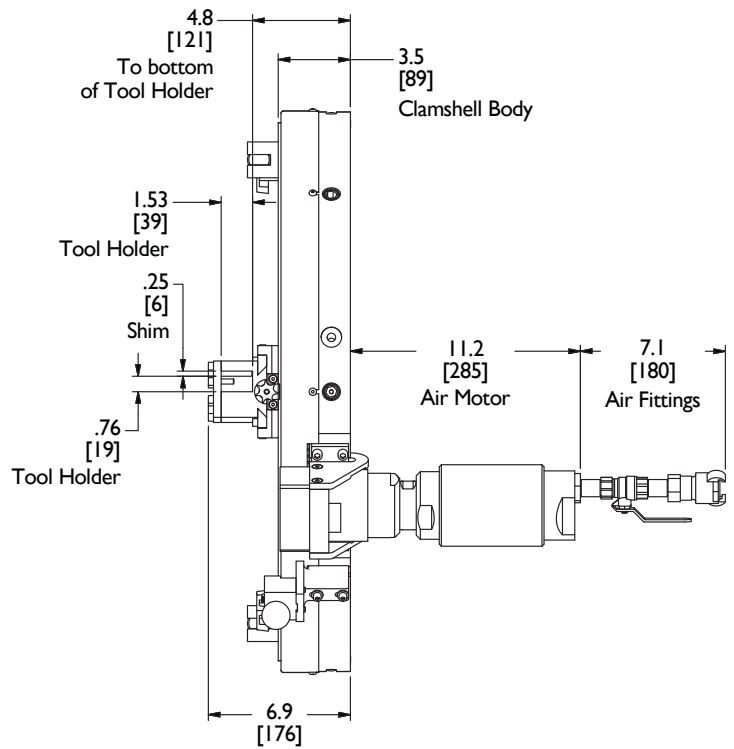
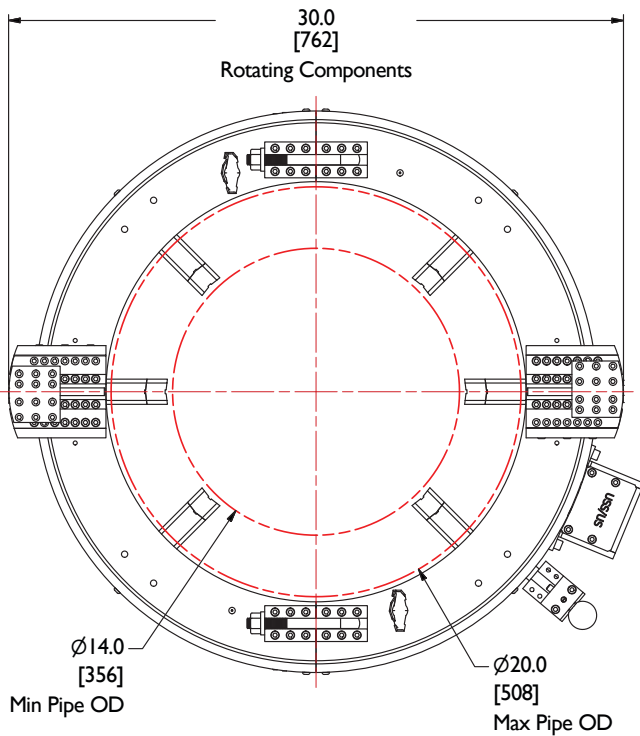
Ph: +61 (08) 9455 6677

Mob/cell: 0409 081 343

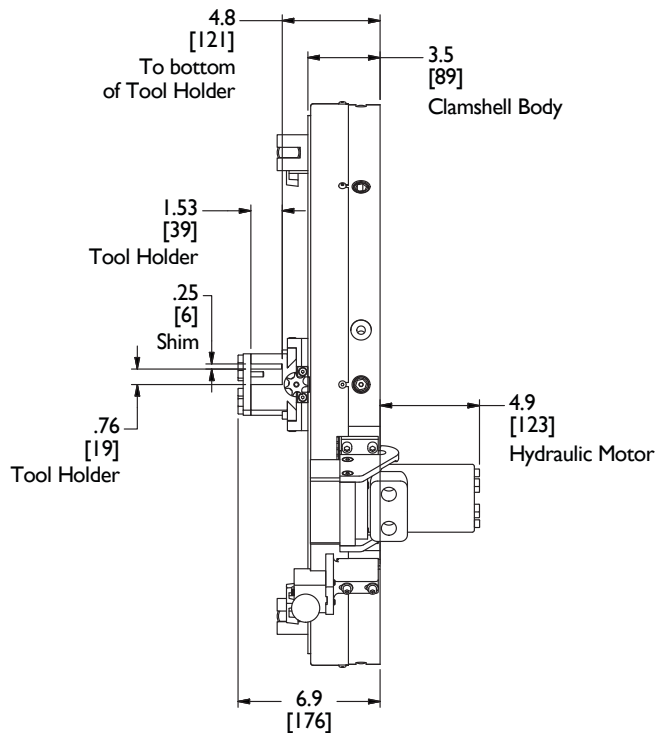
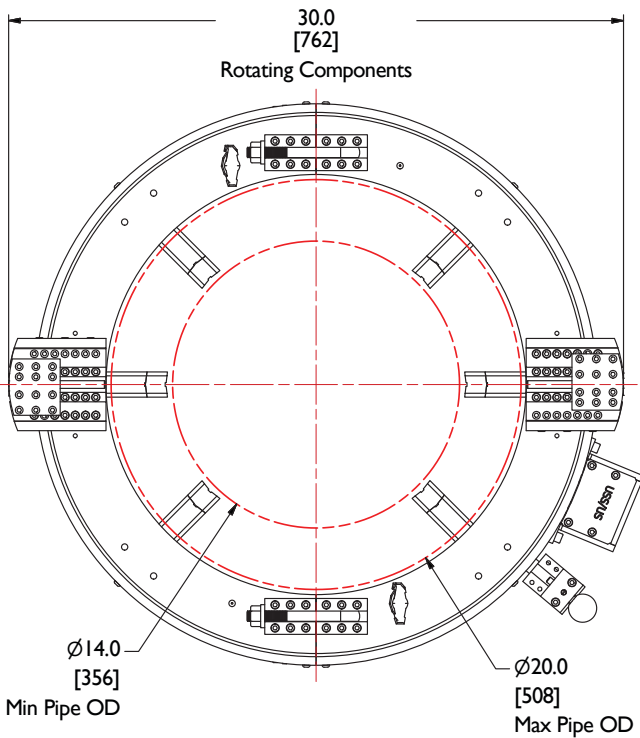
Fax: +61 (08) 9455 6644

820USS CLAMSHELL LATHE

MACTECH PORTABLE MACHINING SOLUTIONS



820USS with Air Drive



820USS with Hydraulic Drive



MACTECH AUSTRALIA HEAD OFFICE:

Unit 2, 52 Vinnicombe Drive, Canningvale, Perth, WA, Australia. 6155
www.mactechaustralia.com.au • alan@mactechaustralia.com.au

Ph: +61 (08) 9455 6677

Mob/cell: 0409 081 343

Fax: +61 (08) 9455 6644